

# MONTHLY MEMBERSHIP PROGRESS REPORT

LOCATION MICHIGAN

District 10

Results as of: 3/31/2022

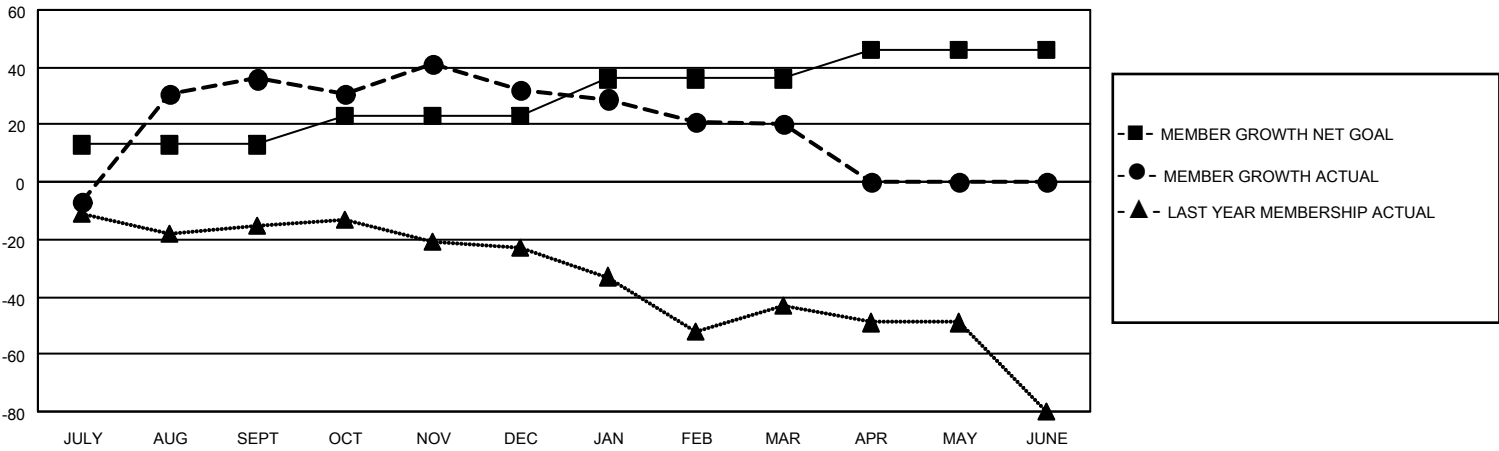
Clubs			
RESULTS FOR 2021-2022			
QUARTER	NEW CLUB GOAL	NEW CLUBS	DROPPED CLUBS
JULY/AUG/SEPT	0	0	1
OCT/NOV/DEC	1	0	1
JAN/FEB/MAR	0	0	0
APR/MAY/JUNE	1	0	0

Members			
RESULTS FOR 2021-2022			
QUARTER	MEMBER GROWTH NET GOAL	MEMBER GROWTH ACTUAL	DROPPED MEMBERS ACTUAL (including transfers)
JULY/AUG/SEPT	13	76	34
OCT/NOV/DEC	10	32	34
JAN/FEB/MAR	13	24	31
APR/MAY/JUNE	10	0	0

**GOALS AND ACTUAL NEW CLUBS CUMULATIVE**



**GOALS AND ACTUAL MEMBERS CUMULATIVE**



**DROPPED CLUBS: 2**

**29 CLUBS OF 52 ADDED 1 OR MORE NEW MEMBERS**

**GENDER DISTRIBUTION**

**DROPPED MEMBERS**

DECEASED	25
CLUB CANCELLED	0
OTHER	74
<b>TOTAL</b>	<b>99</b>

[CLICK HERE FOR CUMULATIVE MEMBERSHIP DATA](#)

MALE	911 (68.60%)
FEMALE	417 (31.40%)
NON BINARY	0 (0.00%)
PREFER NOT TO ANSWER	0 (0.00%)

TOTAL FAMILY UNIT MEMBERS 224

FAMILY MEMBERS PAYING HALF DUES 113